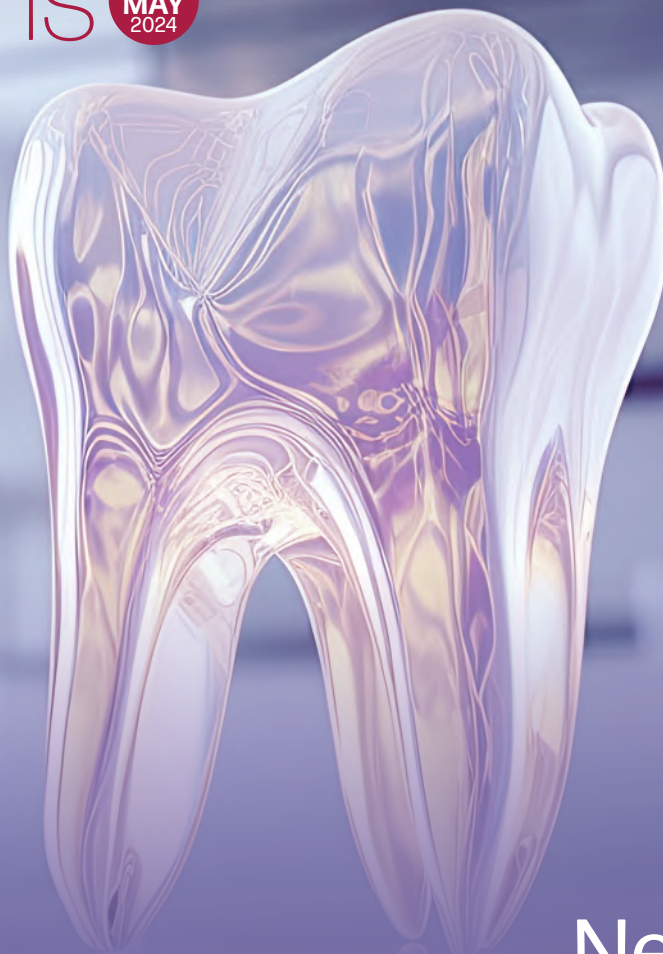


Clinical Solutions

APR
MAY
2024

Prices valid until 31st May 2024.



New! Instrument Range.

Pages 2-4



American Eagle
INSTRUMENTS®



New! Infection Control Range.

Pages 5-6



Bossklein®

- ☎ 0508 802 557
- 🌐 www.healthcareessentials.nz
- ✉ sales@healthcareessentials.nz
- 📷 [healthcareessentialsnz](https://www.healthcareessentialsnz.com)
- 📌 [HealthcareEssentialsDental](https://www.facebook.com/HealthcareEssentialsDental)

Prices exclude GST and freight. Prices may be subject to change. Some items may be on backorder.



- | | | |
|--------------------------------|------------------|-------------|
| Auckland/North Shore/Northland | Emma-Jane | 021 818 919 |
| Auckland/Waitakere/Pukekohe | Fiona | 021 922 014 |
| Waikato/Bay of Plenty/Taupo | Vicki | 021 899 729 |
| Wellington/Lower NI/Gisborne | Anne | 021 450 655 |
| South Island | Nicky | 021 796 360 |

Clinical Solutions



2-4	Instruments	NEW American Eagle Gracey Curettes / Instrument Care Instructions
5-6	Infection Control	NEW Bossklein Surfaces / Impressions
7-10	Restorative	Bioclear Restorative Systems and Products
11	Local Anaesthesia	Ronvig Syringes
12	Local Anaesthesia	Inibsa Local Anaesthetic
13	Grafting	Ethoss Synthetic Bone Regeneration / Degranulation Burs
14	Crown & Bridge / Impressions	DMG Temporary Crowns / Tray Adhesive
15-16	Restorative	Shofu Adhesive / Injectables
17	Restorative	Clinicians Choice Universal Composite
18	Restorative	Vista Composite Wetting Agent
19-20	Restorative	SDI Riva Products
21	Restorative / Preventative	Directa Wedges
22	Preventative	Pulpdent Fissure Sealant
23	Preventative	Centrix Topical Fluoride
24	Oral Hygiene	Directa Prophy Pastes
25-26	Oral Hygiene	TePe Toothbrushes
27	Topical Anaesthesia / Infection Control	Germiphene Topical Anaesthetic / Waterline Treatment Transportation Foam



American Eagle
INSTRUMENTS®

New!
Instrument
Range



Trusted Heritage, **Quality Craftsmanship**

From the mountains of Missoula, MT, every American Eagle Instrument begins with a visionary design and US-made steel that is expertly shaped and hand-honed by master craftsmen. Instruments may seem complicated with their many engineered angles, sophisticated metals and ergonomic grips. But like any tool, the magic is in the performance.



Used with pride by generations of dental professionals across the globe, American Eagle Instruments bestow a simple confidence and trusted heritage of US quality craftsmanship.



View our full range at healthcaressentials.nz

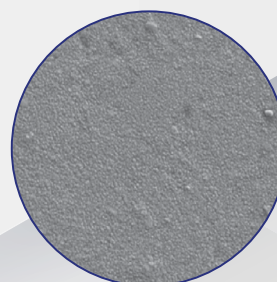
American Eagle XP® Sharpen-Free instruments



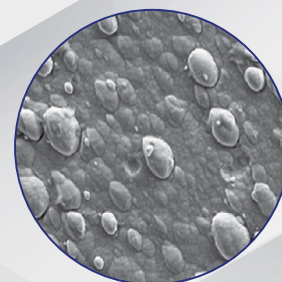
What makes XP instruments sharpen-free?

When titanium nitride and carbon are permeated with high-quality stainless steel, the instrument's metallurgic composition changes, making a much more durable material known as XP technology. It is NOT a coating that can be removed, as the technology is embedded within the metal itself.

Right is a close-up of the resulting defect-free surface of the smooth XP metal vs. the bumpy non-XP metal. The bumps you see are pieces of large macroparticles that may cause a patient to notice a louder "scratchy" sound due to surface roughness. XP Sharpen-Free instruments help decrease auditory discomfort.



XP Technology Surface



Stainless Steel Surface

State-of-the-Art Metal

XP Sharpen-Free technology is NOT a coating. We combine **titanium nitride and carbon** with stainless steel to create a strong, **always-sharp metal**.

Superior to Stainless Steel

XP Sharpen-Free instruments **never have to be sharpened**, and they retain their edge as long as or longer than traditional stainless steel.

Ergonomic Benefits

A sharper metal means using **less pressure to remove calculus**. This allows for gentle "shaving" using lighter strokes, **saving your hands and wrists**.

View our full range at healthcaressentials.nz



American Eagle
INSTRUMENTS®



Gracey Curettes

Double Gracey



ANTERIOR XPXPURPLE AE-DGAXPX



MINI ANTERIOR XPX GREEN AE-DGMAXPX



POSTERIOR XPX3/8 YELLOW AE-DGPPXP



MINI POSTERIOR3/8 RED
AE-DGMPXP

\$101.70
Usually \$113.00

Gracey Deep Pocket With the terminal shank 3mm longer than that of the standard Gracey curette, this instrument can perform scaling and root planing of pockets 5mm or deeper.



1-2 XP 3/8 PURPLE AE-GDP1-2XPX



7-8 XP 3/8 GREEN AE-GDP7-8XPX



3-4 XP 3/8 BLACK AE-GDP3-4XPX



11-12 XP 3/8 ORANGE AE-GDP11-12XPX



5-6 XP 3/8 YELLOW AE-GDP5-6XPX



13-14 XP 3/8 BLUE AE-GDP13-14XPX



15-16 XP 3/8 ORANGE
AE-GDP15-16XPX

\$81.90
Usually \$91.00

Double Gracey Kits



DOUBLE GRACEY KIT XPX
AE-DGKXPX

\$192.60
Usually \$214.00



DOUBLE GRACEY MINI KIT XPX
AE-DGMKXPX

\$192.60
Usually \$214.00



DOUBLE GRACEY 4 INSTRUMENT KIT
W/ SL 5 CASSETTE
AE-DGK4XPX

\$473.40
Usually \$526.00

Gracey Kits

KIT 1 - EAGLE CLAW & EAGLE
TALON™
AE-GEKXPX

Eagle Talon is a combination of two already popular anterior tips: the Jacquette 3 and the Nebraska 128.



\$163.80
Usually \$182.00



KIT 2 - GRACEY 11-12
& GRACEY 13-14
AE-GEK2XPX



KIT 6 M23 & BLACKJACK
AE-GEK6XPX

View our full range at healthcaressentials.nz



XP® Sharpen-Free instrument Care

Like fine clothing, jewellery or high-speed handpieces, your instruments require special care. Although stainless steel instruments, including XP, have outstanding built-in corrosion resistance, incompatibilities do exist with specific chemicals which should be avoided.

Instruments should not be in contact with the following chemicals for more than approximately two hours (then immediately and thoroughly rinsed and dried): aluminum chloride, barium chloride, mercury dichloride, calcium chloride, carbolic acid, citric acid, cresol, mercury chloride, mercury salts, phenol, permanganic acid potash, potassium thiocyanate, ferrous chloride, stanniferous chloride and tartaric acid.

The following chemicals should be avoided completely: Aqua Regia, iron chloride, sulphuric and hydrochloric acid, and iodine.

START WITH QUALITY

Each AEI instrument is subject to comprehensive quality controls during all phases of production, to guarantee AEI's high quality standards.

AEI uses only high grade surgical stainless steels which contain various percentages of carbon and chrome. A specially designed hardening process gives AEI instruments a unique balance of flexibility and optimal durability.

The majority of AEI instruments are handcrafted; shaped, ground and polished by hand. Tips are prepared individually by highly skilled precision crafts-people. Each instrument is continually held to strict quality controls during each stage of fabrication.

With the joint cooperation of various universities and major dental institutions world-wide, AEI is able to offer a range of instruments which include the most recent scientific innovations, and are then fabricated using state-of-the-art technology. AEI is constantly expanding its manufacturing horizons to meet your expectations.

LONGER LIFE FOR YOUR INSTRUMENTS

Each AEI instrument has been designed and manufactured with the greatest of care to fulfill specific functional criteria. Incorrect handling or misuse reduces the service life of these precision instruments. Resultant damage caused by incorrect use is not always related to the instrument design, and the majority of instrument damage can be minimised with proper and routine instrument care. A pair of scissors should not be used as cutting pliers; a need clamp is not a pair of tweezers; and scalers should not be used as root elevators. Designed use is thus an integral part of proper instrument care.

XP curettes are designed for fine sub-gingival scaling and root planing. Avoid using them to trim margins and remove overhangs.

As a result for our new XP technology, we have eliminated the need to apply excessive pressure during use. You will be able to use less force, with a lighter more tactile grasp.

CORRECT DISINFECTION, CARE AND STERILISATION

Sterilisation cannot be a substitute for cleaning! An instrument exposed to high temperatures before being properly cleaned and rinsed, can cause the initiation of permanent stains onto the instrument surface.

Prior to manual cleaning, AEI recommends that instruments be disinfected using solutions which are phenol-free, we recommend using a product from our compatible solutions list.

Instruments should be cleaned in a noncorrosive, neutral cleaning agent with minimal foaming.

Stubborn impurities and debris should be removed with a soft brush (never with steel wool, drill brushes or abrasive items). The instrument should be rinsed in distilled water (not tap water). Some dental surgeries incorporate ultrasonic units or thermidisinfectors within their cleaning systems, where extreme care is also required to ensure that the cleaning agents and chemicals being used do not damage the instrument subsurface. These methods

clean but do not sterilise!

DO'S AND DON'TS

Regardless of sterilisation method, always inspect your equipment for remaining debris and organic or mineral deposits. These can be transferred to the instruments and potentially cause corrosion.

Do not batch stainless steel, aluminum, brass or copper instruments together during the cleaning or sterilisation processes. If batched together, a potential for electrolysis reactions between dissimilar metals will exist, which can produce etching and corrosion on the instrument surfaces.

Use only distilled or demineralised water when caring for dental instruments. High mineral levels in the water, or water that is too soft, can cause permanent stains on the instrument surface.

Whether you use autoclave or germicidal solvents, always follow the manufacturer's instructions precisely regarding specific recommendations for temperatures and times.

Careful drying of instruments during cleaning and sterilising processes is extremely important. Any remaining water or condensation can cause potential rust or corrosion on the instrument surface and into the substrate. This is particularly important when pouch-sterilised process is used or when the autoclave has been opened prematurely. It is advisable to remove any remaining moisture with a sterile cloth.

Identification of engraving added to the instrument surface by the end-user is discouraged. When the polished surface is compromised, a potential inroad for oxidation and/or corrosion is created. 'Slip-on' ID rings is a recommended alternative for custom instrument identification.

With proper care, the longevity and performance of all your professional dental instruments can be extended.

☎ 0508 802 557

🌐 www.healthcareessentials.nz ✉ sales@healthcareessentials.nz



<p>V-WIPE CLASSIC Disinfectant Wipe CONTAINS ALCOHOL</p> <p>Ideal to use on alcohol resistant, non-porous surfaces within the dental surgery where short contact times are important, eg in-between patients.</p> <ul style="list-style-type: none"> Contact time of only 60 seconds Contains 63% Ethanol   <p>EN14476 VIRUS TESTED</p> <p>60 Sec Contact</p> <p>Streak Free</p> <p>Lemon Aroma</p> <p>Refill Pack 200 Wipes (200x200mm) TD-BOS9784 \$17.00</p>	<p>V-WIPE ULTRA PREMIUM Disinfectant Wipe CONTAINS ALCOHOL</p> <p>With the same properties as the V-Wipe Classic, "Ultra" wipes have a 40gsm premium substrate, for ultimate strength and grip. Each wipe measures 175x155mm and each pack contains 160 Ultra wipes.</p>   <p>EN14476 VIRUS TESTED</p> <p>60 Sec Contact</p> <p>Streak Free</p> <p>Lemon Aroma</p> <p>Refill Pack 160 Wipes (175x155mm) TD-BOS1001 \$21.00</p>
---	---

V-WIPE ZERO ECO-XL Biodegradable Disinfectant Wipe

Developed for use in clinical environments, on non-invasive medical devices and general high traffic non-porous surfaces.

- Plastic free wipe
- Plant based fibres
- Renewable resources
- Reduced carbon footprint
- Alcohol free



Flow Pack
100 Wipes
(240x200mm)

TD-BOS8001
\$15.00



SDactiv SURFACE Disinfectant CONTAINS ALCOHOL

Ideal to use on alcohol resistant, non-porous surfaces within the dental surgery where short contact times are important, eg in-between patients.

- Contact time of only 60 seconds
- Contains 63% Ethanol

60 Sec Contact

Streak Free

Lemon Aroma

1Litre Spray Bottle
TD-BOS2005
\$23.50



EN14476 VIRUS TESTED

V-WIPE CLASSIC ZERO ALCOHOL Disinfectant Wipe

Suitable for use on all non-porous surfaces and equipment that are sensitive to alcohol, including the dental chair*

- 2 in 1 - cleans and disinfects

60 Sec Contact

2in1 Cleans & Disinfects

Apple Aroma

Refill Pack
200 Wipes
(200x200mm)

TD-BOS2001
\$17.00



EN14476 VIRUS TESTED

* Always test an inconspicuous area first

Impressions

IMPactive | P Impression Disinfectant Powder

Fast acting, powder based disinfectant. Suitable for all types of impression material including orthodontic impressions.

60 Sec Contact

2% Dilution
20g/1L

Powder Based

Dosing Scoop

Safe for All Types



EN14476 VIRUS TESTED

Tub 700g
TD-BOS9823
\$60.00

BIOCLEAR

Blasting Powder



Aluminium-Trihydroxide powder for use with the Bioclear Blaster. This powder is soft enough that it does not remove tooth structure, but hard enough that it fully removes biofilm.

6oz Bottle

BC-715031-6

\$38.70

Usually \$43.00

6oz Twin Pack

BC-715031-12

\$71.10

Usually \$79.00



Dual Colour Disclosing solution

For the discovery of cracks and biofilm for blasting.

Newer Biofilm stains pink.

Older biofilm & cracks (more than 24 hours) stain purple.

BC-715091 59ml Bottle

\$56.70

Usually \$63.00

Bioclear Blaster Kit

The Bioclear Blaster is the perfect combination of minimally invasive yet effective cleaning power, ergonomic design, easy installation, and adaptability. Using a powerful and effective Aluminium Trihydroxide blasting slurry, the Blaster efficiently removes the toughest biofilm without damaging the enamel surface. The Bioclear Blaster is easy to move between operatories and plugs directly into your dental control unit using any KaVo Multiflex type swivel connection. In addition, the swivel provides a full 360° rotation to reduce tubing drag and wrist strain!



BC-415011

\$2,920.50

Usually \$3,245.00

Contents

- The BLASTER x1
- Cleaning wire x1
- Head o-ring (spare) x1
- Powder seal (spare) x1
- Instruction manual x1



HeatSync Composite Warmer Kit

BC-HEATSYNCH-K

\$2,504.70

Usually \$2,783.00

The HeatSync composite warmer is a must for creating void free injection moulded composites. The HeatSync has ample space for all the composite needed for restorative cases. The layout of the heater facilitates heating of two composite guns, two flowable syringes and up to 6 extra composite compules.

TwinRing Universal

The TwinRing Universal is a major advancement in design and function that will be a welcome upgrade to your Class II composite procedure.



The unique design allows the TwinRing Universal to adapt to a variety of tooth types and shapes, even short molars, short premolars, primary molars, and on top of rubber dam clamps.

The geometry of the ring causes it to apply a strong, even tension that assists in the separation of the teeth; creates a strong seal with the matrix without collapsing the matrix into the cavity; and allows for a superior infinity edge margin when used with the Bioclear matrix and Diamond Wedge.

BC-208042

\$335.70

Usually \$373.00

2-STEP ROCKSTAR POLISH

System

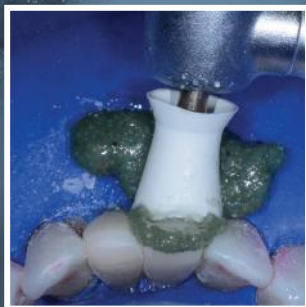
BIOCLEAR

Bioclear's two-step Rockstar Polish is designed to give your composite restorations a phenomenal finish and shine and is one of the four cornerstones of the Bioclear Method.

1. Pre-Measure Magic Mix Paste



2. Begin Pre-Polish



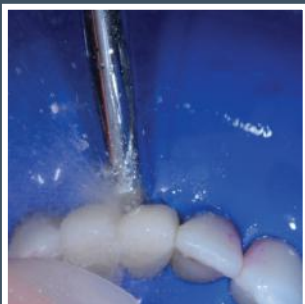
3. Refresh Paste Often



3. Reduce Pressure



5. Rinse



6. Use Rs Polisher Dry



7. Use Rs Polisher Wet



Final Result



Scan for video



Magic Mix
Pre-Polisher Paste
Mint Flavoured 150 grams
BC-700111

\$196.20
Usually \$218.00

Magic Mix
Pre-Polisher Cups
100 disposable prophylaxis cups
BC-623051

\$63.00
Usually \$70.00

2-Step System

Magic Mix
Prophy Cups & Pre-Polish

+

RS Polisher
Polisher Cups

10 Rockstar
Polisher Cups
BC-623041

\$261.00
Usually \$290.00

10 Rockstar
Polisher Points
BC-623031

\$261.00
Usually \$290.00

BT MATRIX



BIOCLEAR

Black Triangle Matrix System

Black Triangle matrices are custom designed for black triangle treatment and require no trimming prior to seating. A colour-coded gauge and matrices make choosing the correct curvature for gingival embrasure closure simple and predictable. Curvature is indicated by colours at the top of the matrix and correspond with a gauge that, when inserted into the black triangle, indicates which curvature to use.



Intro Kit
\$740.70

BC-801003

Usually \$823.00



Item	Quantity
Black Triangle Matrix – Small Blue	10
Black Triangle Matrix – Small Green	10
Black Triangle Matrix – Small Yellow	10
Black Triangle Matrix – Small Pink	10
Black Triangle Matrix – Large Blue	10
Black Triangle Matrix – Large Green	10
Black Triangle Matrix – Large Yellow	10
Black Triangle Matrix – Large Pink	10
Black Triangle Gauge	1
TruContact Heavy Sander, Double-Sided, Red	1
TruContact Light Sander, Single-Sided, Orange	1
TruContact Saw, Blue	1
Bioclear Dual Colour Disclosing Solution – 3ml	1

\$217.80

Procedure Kit **BC-801010** Usually \$242.00

Item	Quantity
Black Triangle Matrix - Small Blue	3
Black Triangle Matrix - Small Green	3
Black Triangle Matrix - Small Yellow	3
Black Triangle Matrix - Small Pink	3
Black Triangle Matrix - Large Blue	3
Black Triangle Matrix - Large Green	3
Black Triangle Matrix - Large Yellow	3
Black Triangle Matrix - Large Pink	3
Black Triangle Gauge	1

Complete HD Anterior Matrix Kit

Item	Quantity
HD Matrix A Series – A101	15
HD Matrix A Series – A102	15
HD Matrix A Series – A103	15
HD Matrix A Series – A104	15
HD Matrix A Series – A105	15
HD Matrix DC Series – DC201	15
HD Matrix DC Series – DC202	15
HD Matrix DC Series – DC203	15
Diamond Wedge – Small	8
Diamond Wedge – Medium	8



BC-820197

\$675.00

Usually \$750.00

HD Anterior Matrix Starter Kit

Item	Quantity
HD Matrix A Series – A101	15
HD Matrix A Series – A102	15
HD Matrix A Series – A103	15
HD Matrix DC Series – DC201	15
HD Matrix DC Series – DC202	15
HD Matrix DC Series – DC203	15
Diamond Wedge – Small	8
Diamond Wedge – Medium	8



BC-820196

\$599.40

Usually \$666.00

BIOCLEAR

Posterior Matrix Kits

Biofit HD Posterior Complete Kit

Kit contains the entire range of Biofit HD Matrices (appropriate for 75% of posterior molar cases) and also includes Diamond Wedges (which have strong separation yet require less effort to place than traditional wedges) and Twin Rings (comprised of strong, long-lived twin NiTi wires).



BC-818081

\$969.³⁰
Usually \$1,077.00 **Kit Contains:**

- | | |
|--|--|
| 25x Posterior Matrix Series - Molar 4.5 | 16x Diamond Wedge Series - Extra Large |
| 25x Posterior Matrix Series - Molar 5.5 | 16x Diamond Wedge Series - Deep Caries |
| 25x Posterior Matrix Series - Molar 6.5 | 1x Twin Ring Series - Molar |
| 25x Posterior Matrix Series - Premolar 5.5 | 1x Twin Ring Series - Premolar |
| 16x Diamond Wedge Series - Small | 1x Twin Ring Forceps |
| 16x Diamond Wedge Series - Medium | 1x Curved Micro Pliers |
| 16x Diamond Wedge Series - Large | |

Biofit HD Posterior Mini Assorted Kit

**Kit Contains:**

- 25x Posterior Matrix Series - Molar 4.5
- 25x Posterior Matrix Series - Molar 5.5
- 25x Posterior Matrix Series - Molar 6.5

BC-818001

\$272.⁷⁰

Usually \$303.00

Biofit EVOLVE Posterior Kit

**Kit Contains:**

- 10x Bioclear Evolve Blue 5mm
- 10x Bioclear Evolve Blue 6mm
- 10x Bioclear Evolve Blue 7mm
- 10x Bioclear Evolve Blue 8mm
- 10x Bioclear Evolve Blue 9mm
- 10x Bioclear Evolve Orange 6mm
- 10x Bioclear Evolve Orange 7mm
- 10x Bioclear Evolve Orange 9mm
- 10x Bioclear Evolve Pink 6mm
- 10x Bioclear Evolve Pink 7mm
- 10x Bioclear Evolve Pink 9mm

BC-827061

\$417.⁶⁰

Usually \$464.00

Biofit EVOLVE Posterior Complete Kit

The Kit offers everything you need to start using Bioclear Evolve Matrix Series in your practice. Following the legacy of the Biofit HD Matrix Series, the Evolve Matrices have the same benefits and additional features for posterior cases.


\$1,254.⁶⁰

BC-827051

Kit Contains:

- | | |
|-----------------------------------|--|
| 25x Bioclear Evolve Blue 5mm | 16x Diamond Wedge Series - Large |
| 25x Bioclear Evolve Blue 6mm | 16x Diamond Wedge Series - Extra Large |
| 25x Bioclear Evolve Blue 7mm | 16x Diamond Wedge Series - Deep Caries |
| 25x Bioclear Evolve Blue 9mm | 1x Twin Ring Series - Molar |
| 25x Bioclear Evolve Orange 7mm | 1x Twin Ring Series - Premolar |
| 25x Bioclear Evolve Orange 9mm | 1x Twin Ring Forceps |
| 16x Diamond Wedge Series - Small | 1x Bioclear Push-Pull |
| 16x Diamond Wedge Series - Medium | 1x Bioclear Evolve Matrix Height Indicator |



ASPIJECT® Passive

Injection syringe for infiltration and block anaesthesia

- Made from high-grade stainless steel and heat-resistant engineering polymer
- Automatic (passive) aspiration occurs when a slight pressure on the plunger is eased
- Self-aspirating without pullback minimises the risk of needle tip movement
- Can be sterilised by any method
- Material and construction guaranteed for 5 years
- New superior surface treatment

RV-2055 Aspiject Passive 1.8ml (CR)

RV-2056 Aspiject Passive 1.8ml (TR)

RV-2060 Aspiject Passive 2.2ml (CR)

RV-2061 Aspiject Passive 2.2ml (TR)

\$254.15
Usually \$299.00



Also available in Thumb Ring (TR)

5 Year
Warranty

ASPIJECT® Active

Injection syringe for infiltration and block anaesthesia

The syringe has an ergonomic design that provides optimal balance and a tactile control of the injection.

\$255.00

Usually \$300.00

RV-2075 1.8ml (TR)

RV-2080 2.2ml (TR)

Self-tapping spiral hook



5 Year
Warranty

ASPIJECT® SIS

Sterile Injection System

Specially designed for use during surgical procedures. Self-aspirating dental cartridge syringe for infiltration and block anaesthesia.

\$232.00

Usually \$273.00

RV-2090 1.8ml



3 pack 1.8ml Autoclavable Barrels

\$51.80

Usually \$61.00

RV-2028

5 Year
Warranty

ASPIJECT® Paroject

Injection syringe for intraligamental local anaesthesia.

PAROJECT® is an unthreatening penstyle intraligamental syringe with a controlled dosage (0.6ml) permitting a slow non-traumatic injection.

\$589.00

Usually \$693.00

RV-2018 1.8ml

RV-2030 2.2ml

Paroject parts are available on request.



5 Year
Warranty

ASPIJECT® Astra

Aspirating Syringe 2.2ml

Self aspirating syringe using a standard anaesthetic cartridge. Manufactured in stainless steel to the highest standards.

\$186.15

Usually \$219.00

RV-2065 2.2ml



Available while stocks last!

5 Year
Warranty

ARDANEST 4%

Articaine HCl 4% + Epinephrine (tartrate) 1:200,000 or 1:100,000



Ardanest 4%

Articaine HCl 4% + Epinephrine (tartrate)

1:200,000



1 mL of solution for injection contains articaine hydrochloride 40.00 mg and adrenaline (epinephrine, as tartrate) 0.005 mg.

One cartridge (1.8 mL) contains articaine hydrochloride 72.00 mg and adrenaline (epinephrine, as tartrate) 0.009 mg.

Each 1.8 mL cartridge contains: 0.71 mg of sodium.

Duration of Action¹:



Pulpar Anaesthesia
45-60 min.



Soft Tissue
120-300 min.

¹ Malamed, SF. - Handbook of local Anaesthesia. Fifth Edition. Elsevier Mosby, 2004. p.71-73. 130.



Regular Dated Price
\$57.00

IN-4670 4% 1:200,000 50 PACK of 1.8ml Cartridges

Ardanest 4%

Articaine HCl 4% + Epinephrine (tartrate)

1:100,000



1 mL of solution for injection contains articaine hydrochloride 40.00 mg and adrenaline (epinephrine, as tartrate) 0.01 mg.

One cartridge (1.8 mL) contains articaine hydrochloride 72.00 mg and adrenaline (epinephrine, as tartrate) 0.018 mg.

Each 1.8 mL cartridge contains: 0.71 mg of sodium.

Duration of Action¹:



Pulpar Anaesthesia
60-75 min.



Soft Tissue
180-360 min.

¹ Malamed, SF. - Handbook of local Anaesthesia. Fifth Edition. Elsevier Mosby, 2004. p.71-73. 130.



Regular Dated Price
\$57.00

IN-4669 4% 1:100,000 50 PACK of 1.8ml Cartridges

Articaine anaesthesia:

- Articaine has faster onset of action (~2 min.) and longer duration than lidocaine and mepivacaine. This is due to its:
 - high liposolubility, which allows it to move better through soft and hard tissues
 - high protein binding, which makes it more firmly bound in the nerve, resulting in longer-lasting blockade or anaesthesia
- Articaine is 1.5 times more potent than lidocaine
- Articaine offers intermediate duration of action
- Articaine is a potent vasodilator, equal to lidocaine. Both cause more vasodilation than mepivacaine and prilocaine
- Local anaesthetics with articaine are formulated in combination with a vasoconstrictor such as epinephrine (adrenaline). Epinephrine increases the duration of action but can have short-term cardiovascular effects
- Indications for both A100 and A200:
 - local, infiltrative, or conductive anaesthesia in simple and complex dental procedures (medium to long duration routine and surgical procedures)
- The anaesthetic efficacy of 4% articaine with 1:200.000 epinephrine is comparable to 4% articaine with 1:100.000

ethOss® **Grow Stronger™**

ethoss® is the result of many years clinical experience with Guided Bone Regeneration in dental surgery. The human body is amazing and wants to heal. ethoss® has been developed to work with it by using fully biocompatible materials to help true host bone regeneration. We prefer to say that it is a material that will quickly and easily turn into bone to help speed along dental procedures.

ethoss® provides a stable scaffold that bio-absorbs. It is completely free from any animal or human content.

It provides an environment rich in phosphate and calcium ions that are absorbed at the required rate to be replaced by new host bone. This true regeneration leaves only host bone. The patient's diseased or damaged tissue is returned to its original state for optimal support of both dentition and dental implants.

ethoss® is:

- Synthetic bi-phasic paste with a simple syringe delivery system
- Sets in vivo to provide a highly stable graft
- No need to use an additional collagen membrane
- Fast conversion to bone – human biopsies show 50% bone at 12 weeks
- Fully replaced by the patient's own bone
- Does not suffer wash-out in bloody sites
- Maintains long term bone volume

ethoss® can be used in the following clinical situations:

- Guided Bone Regeneration
- Periodontitis
- Buccal defects
- Sinus grafts
- Socket filling



EthOss Degranulation Burs & Kits

EthOss Eco Degranulation Kit
4x Burs & Stand
1, 2.5, 3, 3.5mm

ET-ECOGRKIT1
\$500.00
ea

EthOss Degranulation Bur Kit (4 burs)

1, 2.5, 3, 3.5mm
Includes a bur block, cleaning brush and suction tip.

EthOss Degranulation Refill Kits (x3 burs)

Bur Size	Code
2.5mm	ET-GR-REFILL2.5
3.0mm	ET-GR-REFILL3.0
3.5mm	ET-GR-REFILL3.5

\$400.00
ea

ET-TEKDG
\$673.20
ea

EthOss Synthetic Bone Regeneration

EthOss Synthetic Bone Regeneration
(3 x 0.25cc)

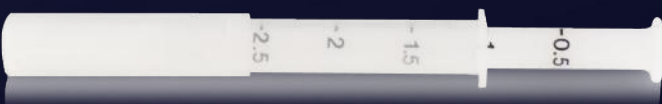
ET-T020230S
\$572.00
ea

EthOss Synthetic Bone Regeneration
(3 x 0.5cc)

ET-T050530S
\$653.00
ea

EthOss Synthetic Bone Regeneration
(3 x 1.0cc)

ET-T101030S
\$770.00
ea



EthOss Case Studies Facebook Group



Luxatemp Fluorescence

The temporary crown and bridge material for natural aesthetics.



- Natural fluorescence in six shades
- Low polymerisation shrinkage
- High fracture and abrasion resistance
- Outstanding colour stability
- Low allergy potential
- Suited for long-term temporaries



1x 76g Cartridge
15x Automix-Tips

\$227.70
Usually \$253.00

A1 DM-110585
A2 DM-110586
A3 DM-110710

A3.5 DM-110587
B1 DM-110588
BL DM-110589

Luxatemp Automix Tips

Mixing tips for Luxatemp Automix Cartridges

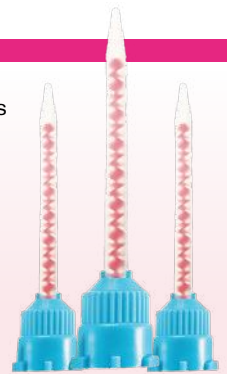
- Mixing Ratio 1:1
- Blue / Orange

45 Pack

DM-110409

\$67.50

Usually \$75.00



Luxatemp Glaze & Bond

Surface sealer and repair material for temporary crowns and bridges.

- High gloss shine without polishing
- Excellent bond with repair materials
- Extraordinary abrasion resistance
- Low surface roughness



\$76.50

Usually \$85.00

DM-211927

5 ml Bottle

TempoCem NE luting cement

Temporary luting of crowns, bridges, inlays and onlays.

TempoCem NE is your self-mixing, classic, temporary cement without eugenol. It is ideally suited to temporary luting of temporary and permanent crowns, bridges, inlays and onlays, not least due to its very thin film thickness.



DM-212104

\$106.20
Usually \$118.00

Smartmix

2x Smartmix Syringes @ 5 ml
20x Smartmix Tips Short

Tray Adhesive For A-Silicones

Tray adhesive for all VPS materials

DMG Tray Adhesive for A-Silicones is formulated to offer optimal adhesive between addition-silicone-based impression materials (VPS) and minimally retentive or non retentive metal, plastic or resin trays.

It is ideal for use with all impression materials, especially Honigum. Available in convenient 10 ml bottle.



- Promotes the bond of VPS-based impression materials in the impression tray
- Easy to apply and handle
- Short setting time after application
- Blue colour visual control

10 ml Bottle

DM-909394

\$48.60

Usually \$54.00

DMG
Dental Milestones Guaranteed

BeautiBond Xtreme



The Extremely Effective Universal Adhesive

BeautiBond Xtreme is an all-in one, truly universal adhesive for bonding direct and indirect restorations. A single application on the restoration surface assures a strong, fast and reliable adhesion to a multitude of substrates, without the need of additional primers. The HEMA-free formulation enables easy removal of solvents, eliminates risk of allergies and bond hydrolysis, assuring a stable bond.

No compromises on technique or steep learning curves! The choice is yours: Self-Etch, Selective-Etch, or Total-Etch. BeautiBond Xtreme offers the flexibility to bond restorations in a way that suits your daily workflow.

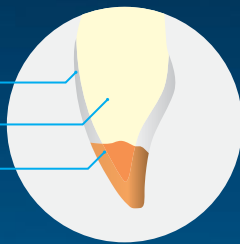
Clinical Applications:



Universal Adhesive that bonds to all restorative substrates:

Direct

- Enamel
- Dentine
- Direct Composite



Indirect

- Feldspathic Porcelain
- Hybrid Ceramics
- Zirconia Ceramics
- Lithium Silicate
- Glass Ceramics
- Indirect Composite
- Metal



10% OFF

BEAUTIBOND XTREME SET

- 1x 5ml bottle
- 50x Microbrush
- 25x V dish

SH-Y2448

\$128.52

Usually \$142.80



BEAUTIFIL Injectable X

One true bioactive universal Injectable restorative
Designed to help simplify work flow and save time with predictability...

- **Inject as you Shape** to boost efficiency
- **Remarkable Strength** for anterior and posterior restorations
- **Life-like Aesthetics** with self-polishing gloss

Formulated with the Nano-optimised Silane technology to provide strength and aesthetics of a packable composite with the unique "inject as you shape" convenience.

Custom designed, disposable Barrier Sleeves for Beautiful Injectable X provides additional protection against cross-contamination.

- A1 SHY2501
- A2 SHY2502
- A3 SHY2503
- A10 SHY2511
- A20 SHY2512
- Incisal SHY2513
- BW SHY2514

Barrier Sleeve 50pk SH-2070
\$8.20

Clinical Applications

Restoration of Anterior / Posterior teeth

- Class I – VI cavities & Root caries
- Pediatric and geriatric dentition
- Tooth wear (Abrasion, Erosion, Abfraction)

Minimally invasive cosmetic restorations

- Diastema closure, Tooth surface defects
- Tooth size and shape modification
- Smile rejuvenation

- **Cuspal Restoration**
- **Post-ortho corrections & Black triangle closure**
- **Composite Tooth Splinting**
- **Repair of Composite or Ceramic restorations**

Properties

- **Compressive Strength above 400 Mpa**
- **Flexural Strength 127 Mpa**
- **Radiopaque**



Flow after 60 seconds

\$35.00
2.2gm syringe

BEAUTIFIL Injectable X^{SL}

One true bioactive SELF-LEVELLING injectable restorative
Designed to help simplify work flow and save time with predictability...

- **High strength self-levelling flowable**
- **Life-like Aesthetics** with self-polishing gloss
- **Durable** even on the surface of restorations

Formulated with the Nano-optimised Silane technology to provide strength and aesthetics of a packable composite with the unique flowable consistency.

Custom designed, disposable Barrier Sleeves for Beautiful Injectable Xsl provides additional protection against cross-contamination.

- A1 SHY2521
- A2 SHY2522
- A3 SHY2523
- A3.5 SHY2524
- A30 SHY2531
- Incisal SHY2532
- BW SHY2533

Barrier Sleeve 50pk SH-2070
\$8.20

Clinical Applications

Restoration of Anterior / Posterior teeth...

- Class III, IV, V cavities & Root caries
- Gingival box of Class II
- Tooth wear (Abrasion, Erosion, Abfraction)
- Deep Margin Elevation (DME)

- **Palatal shell technique for Class IV**
- **Base & Liner**
- **Orthodontic bracket placement**
- **Composite Tooth Splinting**

Properties

- **Compressive Strength above 400 Mpa**
- **Flexural Strength 127 Mpa**
- **Radiopaque**



Flow after 60 seconds

\$35.00
2.2gm syringe

Evanesce™

Nano-Enhanced Universal Restorative



Strong. Simple. Beautiful.

Simple or complex. Single shade or layering technique, anterior or posterior. Whatever your technique or indication, **Evanesce™ Nano-Enhanced Universal Restorative** is designed for truly natural, life-like aesthetics.

Exceptional Handling

Evanesce, a nano-hybrid composite material, has a stiffer viscosity, yet its non-sticky formula and ease of manipulation make it highly adaptable. Once placed, Evanesce can be sculpted without slumping to save on finishing time.

A Complete Restorative System

High strength, Evanesce is 82% filled and boasts a high compressive strength, low wear, and low shrinkage to give you confidence for both anterior and posterior restorations.

Truly universal for both anterior and posterior composite restorations, Evanesce features ideal, slump-free handling and beautiful shade matching to the VITA shade guide. Evanesce is highly polishable for the ultimate in restorative aesthetics.

- ✓ Excellent putty-like handling, will not slump
- ✓ Excellent shade match, polishes fast to a high shine
- ✓ Blends into natural dentition beautifully
- ✓ Often requires a single shade, or in more complex cases, fewer layers of composite
- ✓ Provides an ultra-high, long-term polish
- ✓ Available in 29 VITA shades in 3 opacity options: Enamel (80%), Universal (85%), and Dentine (90%)
- ✓ UX Shades (85%) indicate a slightly lower viscosity
- ✓ Use Enamel FX Shades to enhance aestheticss enamel characterisation: Enamel White, Enamel Incisal and Enamel Clear



Before



Anterior Build-Up and Shade Change

photography courtesy of Marcos Vargas, BDB, DDS, MS

Shade	Code	A3.5	CC-321504
A1	CC-321501	B1	CC-321505
A2	CC-321502		
A3	CC-321503		

\$72.00 Usually ~~\$80.00~~

4gm Universal Syringe

Shade	Code
A1	CC-322501
A2	CC-322502
A3	CC-322503
A3.5	CC-322504
B1	CC-322506

\$126.00

Single Dose 0.3gm 20 Pack

 **Clinician's Choice**
Designed for better dentistry.

Seamfree

Composite Wetting Resin & Lubricant



SeamFree is a wetting resin that has been designed to make the handling of composite material easier and more consistent by eliminating the tackiness that makes manipulation difficult. Not only does SeamFree eliminate handling issues, but it doesn't build film thickness or add a visible layer between composite layers.

- Eliminates tackiness of composite materials
- Does NOT add layers or thickness to composite
- Absorbs into composite after use, does NOT need to be dried or light activated
- Does NOT change physical properties of composite material



3ml Bottle Kit

- 1x 3mL Bottle
- 1x Single-Cavity Well
- 25x Applicators

V-90027 **\$117.00**
Usually \$130.00

"If you haven't used SeamFree yet, use it TOMORROW. This stuff is great and will take your polishing and shaping time down significantly. You drop a little bit of SeamFree on your composite and you can shape however you want without dragging."
-Dr. John Kanca

"What makes SeamFree a genius product is that it will copolymerise instantly when covered by a material that will light activate, but never polymerise on its own. So you never have a thick layer of unpolymerised resin, you spend less time sculpting and less time polishing."
-Dr. John Flucke

"In conjunction with the composite heater this makes the spreading and contouring of composite amazingly easier. If you don't have a composite warmer, SeamFree is a must, as it also cuts the amount of time needed to polish."
-Dr. Michael Miyasaki



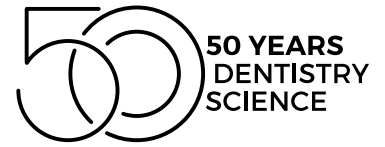
1.2ml Syringe Kit

- 1x 1.2ml Syringe
- 10x Exacta-Flo™ Tips

V-90025 **\$43.20**
Usually \$48.00

SDI SPECIAL

APRIL - MAY 2024



ionglass™
BIOMIMETIC FORMULA



THE RIVA RANGE

**BUY 3 GET 1
FREE***

No lock in contracts

Guaranteed savings
with reduced inventory



CALL FREE 0508 802 557

Fax: 04 3873874
sales@healthcareessentials.nz
www.healthcareessentials.nz

YOUR LOCAL REPRESENTATIVE:

Auckland / North Shore / Northland
Emma-Jane Somerfield 021 818 919

Auckland / Waitakere / Pukekohe
Fiona Zuccani-Heard 021 922 014

Waikato / Bay of Plenty / Taupo
Vicki Slow 021 899 729

Wellington / Lower North Island / Gisborne
Anne Carter 021 450 655

South Island
Nicky Grant 021 796 360

*All prices exclude GST. Offers cannot be combined. Valid on invoices dated April 1st - May 31st 2024. All claims for bonus goods must be made within 30 days from the end of promotion date. Bonus goods must be of equal or lesser value. Offers are valid in New Zealand only.

THE RIVA RANGE

BUY 3 GET 1 FREE*

RIVA SELF CURE/HV

BULK FILL GLASS HYBRID RESTORATIVE SYSTEM

- Contains SDI's proprietary ionglass™, a high ion releasing, radiopaque, bioactive glass that remineralises and prevents secondary caries formation
- Very high fluoride releasing and recharging ability
- Exceptional Handling; Non-sticky, non-slumping and sculptable formulation
- Easy Activation Capsule - 70% easier to activate
- Ideal materials for dentine replacement
- Radiopaque
- BPA & HEMA free

BOX OF 50 CAPSULES - MRP \$258 + GST



RIVA LIGHT CURE/HV

LIGHT CURED RESIN REINFORCED GLASS IONOMER RESTORATIVE MATERIAL

- Contains SDI's proprietary ionglass™, a high ion releasing, radiopaque, bioactive glass that remineralises and fights against secondary caries formation
- Exceptional handling; easy to sculpt and non-sticky - available in both regular and high viscosity
- Easy Activation Capsule - 70% easier to activate
- Long term wear resistance due to high surface hardness
- High flexural strengths
- BPA free

BOX OF 50 CAPSULES - MRP \$322 + GST



— RIVA LIGHT CURE HV —

RIVA CEM AUTOMIX

RESIN MODIFIED GLASS IONOMER LUTING CEMENT

- Superior bond (enamel & dentine)
- Highest flexural strength
- More tips / less tip waste
- The best long term aesthetics
- Light tack cure option
- Sustained fluoride release
- BPA free
- Shade: light yellow

2 X 4G SYRINGE REFILL - MRP \$120 + GST



RIVA LUTING

- Chemically adheres to tooth structure and metal substrates
- Very low film thickness - flows easily between restoration and tooth
- Exceptional bond strengths
- BPA & HEMA free

BOX OF 50 CAPSULES - MRP \$261 + GST



RIVA LUTING PLUS

- Chemically adheres to tooth and substrates
- Exceptional bond strengths
- High flexural strength - reduced cracking and failure in flexion

BOX OF 50 CAPSULES - MRP \$295 + GST



RIVA PROTECT

- ACP nanotechnology - supercharges remineralisation
- Very high fluoride releasing and recharging ability to protect teeth from acid attacks

BOX OF 50 CAPSULES - MRP \$261 + GST



RIVA SILVER

MERCURY FREE, FLUORIDE RELEASING, SILVER RESTORATIVE

- Silver reinforced
- Ideal for abfraction lesion restorations
- Ideal for bulk filling
- No shrinkage

BOX OF 50 CAPSULES - MRP \$295 + GST

DIRECTA FenderWedge®

Protects the adjacent tooth & gingiva during preparations.

- Confident preparations
- Protects the adjacent tooth
- Pre-Separation
- Protects gingiva



Bur damage to adjacent teeth is a common problem in everyday dental practice. Research shows that 70% of adjacent teeth suffer damage during class II preparations.* FenderWedge prevents damage to the adjacent tooth and gingiva that commonly

occurs during Class II preparations.

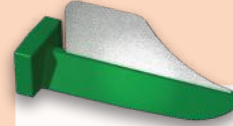
FenderWedge is a combination of a steel plate and a plastic wedge. It facilitates easy application of a matrix. To avoid aspiration it is recommended to secure FenderWedge with a waxed dental floss.



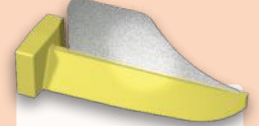
Extra Small
36 Pack DA-6027-54
100 Pack DA-6028-03



Small
36 Pack DA-6027-51
100 Pack DA-6028-00



Medium
36 Pack DA-6027-52
100 Pack DA-6028-01



Large
36 Pack DA-6027-53
100 Pack DA-6028-02

DA-6027-50
Assorted Pack 144pcs
36 of each size
\$221.00
Usually \$260.00



36 Pack \$64.60
Usually \$76.00

100 Pack \$135.10
Usually \$159.00

* Ovist V, Johannessen L, Bruun M (J Dent Res 1992 Jul; 71 (7): 1370-3) Lussi A, Gygax M. (J Dent. 1998 Jul-Aug; 26 (5-6):435-41), Medeiros VA, Seddon RP (J Dent. 2000 Feb; 28 (2): 103-10)

DIRECTA FenderMate®

Sectional matrix for Class II composite restorations.

- Predictable contact and anatomic shape
- One piece design
- No cervical overhang
- Designed for minimally invasive dentistry



FenderMate is a pre-curved, one-piece sectional matrix and wedge that provides for quick, safe and predictable composite restorations, with a tight contact and cervical sealing. FenderMate is designed to be inserted either buccally or lingually.

The matrix reaches from the base of the wedge to just above the occlusal surface. The side of the wedge facing the adjacent tooth has an angled wing.



Left Regular
18 Pack DA-6027-71
100 Pack DA-6028-04



Left Narrow
18 Pack DA-6027-72
100 Pack DA-6028-05



Right Narrow
18 Pack DA-6027-74
100 Pack DA-6028-07



Right Regular
18 Pack DA-6027-73
100 Pack DA-6028-06

DA-6027-70
Assorted Pack 72pcs
18 of each size
\$345.90
Usually \$407.00



18 Pack \$99.40
Usually \$117.00

100 Pack \$405.40
Usually \$477.00

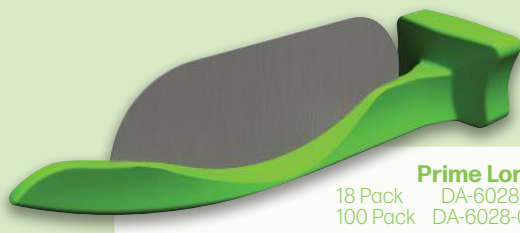
DIRECTA FenderMate® Prime

Protective and easy matrix for primary teeth.

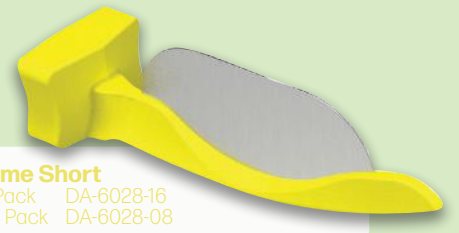
- Designed for primary teeth
- Easy placement
- Bendable
- One piece design

FenderMate Prime uniquely combines a preparation shield and matrix for use in Class II fillings of primary teeth, where quick and simple solutions are highly valued. It is composed of an interproximal plastic wedge with an inbuilt steel plate. The "boat-shaped" tip allows the gingiva to be

compressed without causing damage and reduces the risk of bleeding. FenderMate Prime is available in two sizes; long and short. FenderMate Prime green (long) is bendable and can be shaped to the contour of the tooth. FenderMate Prime yellow has a shorter, more rigid plate for very tight interproximal spaces.



Prime Long
18 Pack DA-6028-17
100 Pack DA-6028-09



Prime Short
18 Pack DA-6028-16
100 Pack DA-6028-08

DA-6028-15
Assorted Pack 36pcs
18 of each size
\$99.40
Usually \$117.00



18 Pack \$45.90
Usually \$54.00

100 Pack \$151.30
Usually \$178.00

embrace™ wetbond™ pit & fissure sealant



PULPDENT®

Moisture Tolerant • Fluoride & Phosphate Releasing • Light Cure

CONTAINS NO BISPHENOL A, NO BIS-GMA,
NO BPA DERIVATIVES



PL-DEMS	4 x 1.2ml	\$137.70 Usually \$153.00
PL-DEMSW	4 x 1.2ml	\$137.70 Usually \$153.00
PL-DEMSEB	20 x 1.2ml	\$675.00 Usually \$750.00

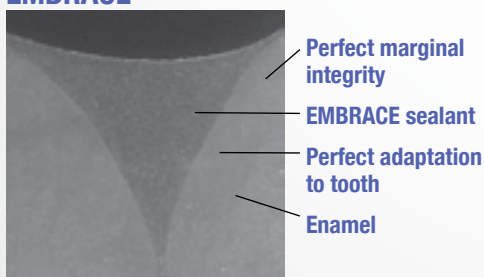
Embrace is the first pit and fissure sealant that bonds to the moist tooth. Research shows remarkable sealing ability and adaptation to tooth structure.*¹ The margins are undetectable, and the long-term success has been reported in the literature.*^{2,3} Embrace releases and recharges phosphate and fluoride, and it has longer lasting antibacterial activity compared to other leading brands, especially against *S. mutans*.*^{4,5}

*1 Kane B, Karren J, Garcia-Godoy C, Garcia-Godoy F, *2 Strassler HE, O'Donnell JP, Inside Dentistry 2008;4(9):108-110, *3 O'Donnell JP, Inside Dentistry 2008;4(7):50-52, *4, *2 Sharma S, Kugel G. IADR Annual Meeting 2008, *5 Naorunroj S, et al., J Dent 2010;38(5):387-391

Exceptional Marginal Adaptation

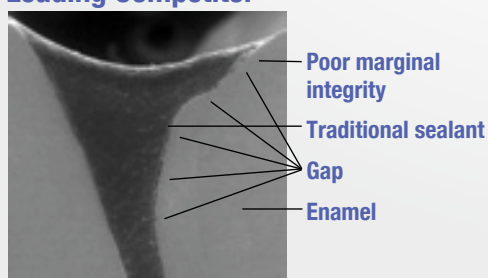
Embrace Sealant forms an intimate association with the moist tooth. It is tooth-integrating, creating a margin-free interface between the resin and the tooth that eliminates microleakage.

EMBRACE



SEM shows Embrace Pit & Fissure Sealant without bonding agent. Note the smooth margin and the extraordinary adaptation of the sealant to the tooth.

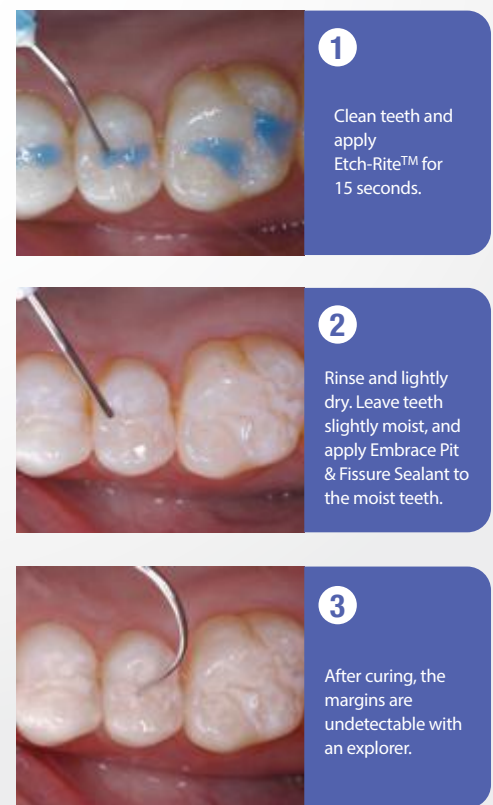
Leading Competitor



SEM shows leading competitor's traditional pit and fissure sealant without bonding agent. Note the large gap between the sealant and the tooth.

Kane B, Karren J, Garcia-Godoy C, Garcia-Godoy F. Sealant adaptation and penetration into occlusal fissures. Am J Dent 2009;22(2):89-91.

EMBRACE WetBond Procedure



Photos courtesy of Dr. Christopher Ramsey



centrix
MAKING DENTISTRY EASIER

FluoroDose®

5% Sodium Fluoride Varnish with Xylitol



Dip. Mix. Brush. Throw away.

FluoroDose contains 5% sodium fluoride in a convenient single-use Lollipop®. Each unit contains one single dose (0.3mL) of FluoroDose plus one Benda® Brush applicator. Simply peel back the cover, dip in the brush, mix and apply.

Description

- Contains Xylitol
- Unit-dose delivery allows for ease of use and clean-up
- Swipe-on procedure is easier and safer to use than gels and rinses, done in less than a minute
- Dries in seconds upon contact with saliva
- Remains on tooth for 6 to 8 hours for optimum fluoride uptake
- Available in 5 great-tasting flavours: Caramel, Bubble Gum, Mint, Cherry and Melon
- 5% sodium fluoride (NaF) or 22,600 ppm of fluoride
- Benda Brush applicators also allow you to mix the varnish prior to application, guaranteeing a consistent level of fluoride in every application
- No more messy gels and uncomfortable trays; no more inherent worry of fluoride ingestion

Allergen Risk Information

- FluoroDose is lactose free, gluten free and nut free
- Product is free of all dairy, egg, gluten, soy, peanut, tree nuts, tree nut derivatives, fish/shellfish and seed products
- FluoroDose contains rosin, beeswax and red dye 40

120 PACK

- | | |
|-----------------------------|--------------------------|
| CE-360086 MINT | CE-360110 CHERRY |
| CE-360087 BUBBLE GUM | CE-360137 CARAMEL |
| CE-360107 MELON | |

\$308.70
Usually \$343.00

5 FLAVOUR MIXED PACK

Perfect for private practice

CE-700001 FLUORIDE VARNISH 40 PIECE

\$106.20
Usually \$118.00



Flavours

- Cherry
 Mint
 Caramel
 BubbleGum
 Melon



DIRECTA

10% OFF

ProphyCare®

ProphyCare® Prophy Paste CCS various grits for various needs

Prophy Paste CCS is second to none in performance, handling and dispensing. The unique non-splattering, homogeneous formula does not dry out, liquify or separate. Thick layers of plaque and stains are easily removed leaving a fresh and smooth minty sensation after each treatment. Packed in easy to dispense, **colour coded tubes** and **single dose disposable cups (144x 2g)**. Available in 4 different grits from coarse to extra-fine. **Contains 0,1% fluoride**.

"The perfect starter, effective removal of stubborn stains"

COARSE Blue RDA 250

Tube 60ml	DA-7311-13	Usually \$51.00	NOW \$45.90
Paraben Free	DA-7311-16	\$51.00	\$45.90
Single Dose	DA-6901-23	\$230.00	\$207.00

"Less abrasive, but still effective"

MEDIUM Green RDA 170

Tube 60ml	DA-7311-14	Usually \$51.00	NOW \$45.90
Single Dose	DA-6901-22	\$230.00	\$207.00

"Gentle cleaning, tissue friendly stain remover"

FINE Red RDA 120

Tube 60ml	DA-7311-12	Usually \$51.00	NOW \$45.90
Paraben Free	DA-7311-15	\$51.00	\$45.90
Single Dose	DA-6901-21	\$230.00	\$207.00

"Ideal for final polishing"

EXTRA FINE Yellow RDA 40

Tube 60ml	DA-7311-11	Usually \$51.00	NOW \$45.90
Single Dose	DA-6901-20	\$230.00	\$207.00

"Clean, polish and desensitize"

CLEAN & POLISH Lilac

Tube 60ml	DA-7411-11	Usually \$60.00	NOW \$54.00
Single Dose	DA-6901-25	\$289.00	\$260.10

"Powerful relief from dentin hypersensitivity"

PROPHY PASTE HAP

Fluoride & Paraben Free

Tube 60ml	DA-7311-17	Usually \$51.00	NOW \$45.90
-----------	------------	-----------------	-------------

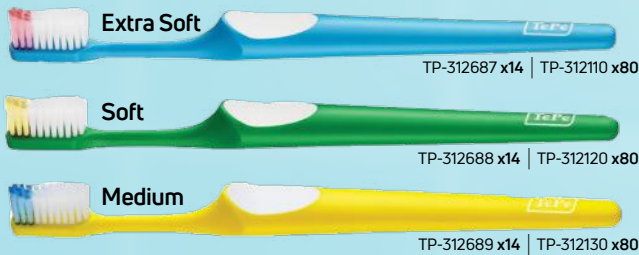


Toothbrushes

TePe's user-friendly toothbrushes are developed for efficient and gentle plaque removal. A variety of models and sizes facilitate daily oral care for adults and children.

We care for healthy smiles

TePe Nova



- Easy-reach tip for access to hard-to-reach areas, especially around the back teeth
- Round-ended filaments ensure gentle cleaning
- Easy-grip handle with thumb pad for extra comfort

All toothbrushes can be angled for better access.



\$51.00

ONLY \$3.64 per Brush



\$230.50

ONLY \$2.88 per Brush

TePe Supreme



- Efficient cleaning due to the longer, tapered bristles
- Unique two-level filament design for excellent reach
- Easy-grip handle with thumb pad for extra comfort



TP-352688
\$52.00

ONLY \$3.71 per Brush



TP-352100
\$258.10

ONLY \$3.22 per Brush

TePe Supreme Compact



- Unique two-level filament design for excellent reach
- Easy-grip handle with thumb pad for extra comfort
- Suitable for children or for adults who prefer a smaller brush head



TP-392120
\$258.10

ONLY \$3.22 per Brush

TePe Special Care



- First brush stage after oral surgery
- For patients with extremely sore and delicate tissues, as a result of trauma and radiotherapy treatment



TP-452357
\$61.20

ONLY \$4.37 per Brush



TP-452150
\$95.90

ONLY \$3.83 per Brush

TePe Special Care Compact



- First brush stage after oral surgery
- For patients with extremely sore and delicate tissues, as a result of trauma and radiotherapy treatment



TP-452151
\$95.90

ONLY \$3.83 per Brush

TePe Implant Orthodontic



- Long and thin neck for better access
- For cleaning buccal implant surfaces or orthodontic appliances



TP-442368
\$54.10

ONLY \$3.86 per Brush



TP-442100
\$75.50

ONLY \$3.02 per Brush

TePe Extra Grip



- Provides a comfortable, stable grip which helps patients with reduced manual dexterity
- Weighs only 30 grams
- Fits TePe Select, TePe GOOD toothbrushes and most of our special brushes



TP-912210
\$40.80

ONLY \$10.20 per Grip

Specialty and Kids Toothbrushes

TePe offers a wide range of cleaning devices developed for individuals with specific oral hygiene needs.



We care for healthy smiles

TePe Compact Tuft



- Dome-shaped brush head with dense rounded tuft
- Ideal for cleaning along the gumline, on the occlusal surfaces of emerging teeth, or impacted wisdom teeth



TP-432368

\$62.20

ONLY \$4.44 per Brush



TP-432100

\$82.60

ONLY \$3.30 per Brush

TePe Universal Care



- A unique angle provides easy access to the lingual and palatal surfaces of teeth and implants
- Facilitates cleaning in narrow and hard-to-reach areas
- End-rounded filaments to ensure a safe and gentle clean



TP-472368

\$65.30

ONLY \$4.66 per Brush

TePe Interspace



Soft

TP-412364



Medium

TP-412366

- Cleaning behind furcations, implants, fixed braces or the last tooth
- Brush tip can be attached to either side of the neck for different angles
- Comes with 12 replaceable brush tips
- Colour-coded tip softness choices

Yellow Tips: soft
Blue Tips: medium



\$118.30

ONLY \$8.45 per Tip

TePe Kids



- Brush with colourful print suitable from the age of 3 years
- Tapered small brush head for easy access
- Round-ended filaments for gentle and efficient cleaning
- Handle suits both kids and assisting adults



Select Compact with illustrations.

TePe Kids are recommended from 3 years and up.

Available in Extra Soft or Soft.

Extra Soft TP-339160
Soft TP-339161



\$83.60

ONLY \$3.34 per Brush

TePe Mini



- Recommended from the first tooth
- Tapered small brush head and round-ended filaments for efficient cleaning
- Handle provides a stable grip for the adult brushing the child's teeth, but fits just as well in a small hands



Recommended from the first tooth.

Available in Extra Soft or Soft.

Extra Soft TP-382110
Soft TP-382120



\$51.00

ONLY \$2.04 per Brush



Topical Anaesthetic Gel

Temporarily **eliminating pain** makes everyone's job easier



Minimises the pain in oral mucosal tissue arising from needle punctures, deep scaling procedures, prosthetic adjustments, clamp or crown placement, removal of primary teeth and suture removal.

Contains 18% benzocaine and 2% tetracaine



GP-HZAP

Award winning one touch 50ml Applicator Jar

\$70.20 Usually \$78.00



E2O™ Dental Waterline & Shock Treatment

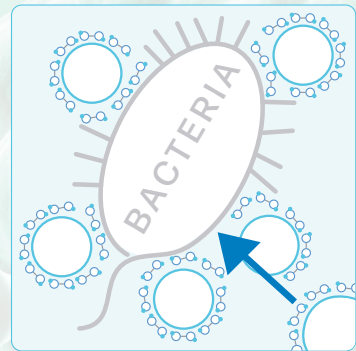
An easy and effective way to **control biofilm and bacteria** in your water system, without using harsh chemicals. Reduce the risk of cross contamination, while cleaning your dental waterline tubing. Specifically designed for use in independent water bottle systems.

GP-HE20

\$143.10
Usually \$159.00

236ml Bottle

Made with Effective Stabilised Hydrogen Peroxide. Yes, the stabiliser does make a difference!



Stabiliser

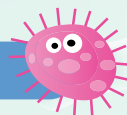


Bacteria



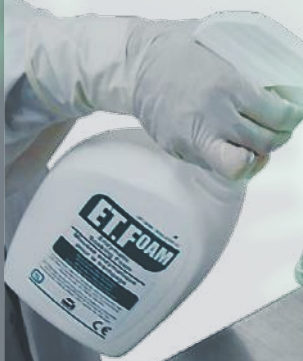
Hydrogen Peroxide

A pump a day keeps bacteria and biofilm away!



Enzymatic Transportation Foam

ET Foam is specially formulated for use on instruments during transportation and prior to processing. Simply spray ET Foam on the instruments to keep them moist, and to initiate self cleaning prior to processing.



1 Litre Spray Bottle

GP-HET
\$66.60
Usually \$74.00

Keeps soiled instruments wet during transport or prior to processing.

